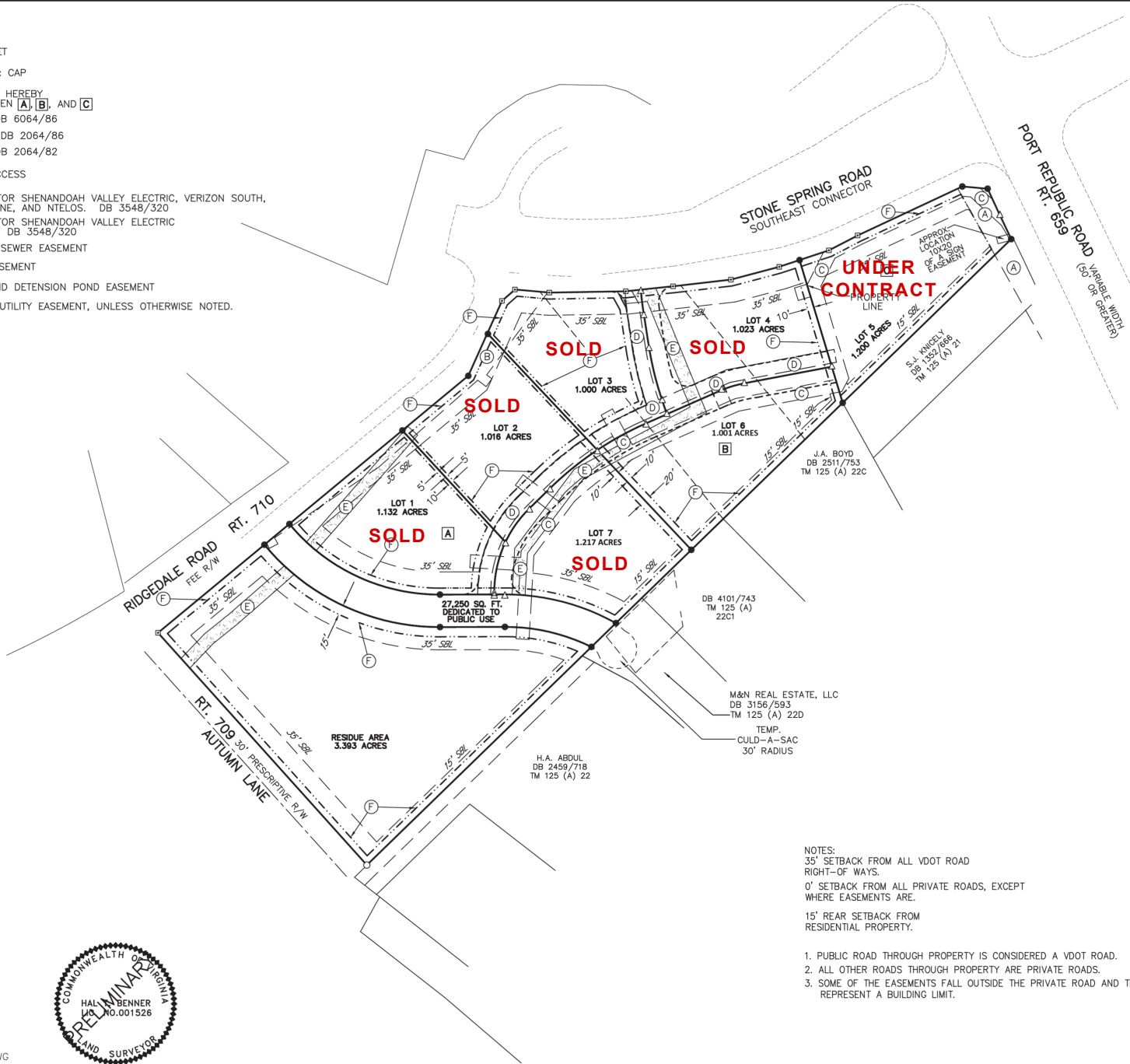


COFFMAN'S CORNER

Naomi's Way , Harrisonburg, VA 22801

PLAT

SET
I & CAP
INE HEREBY
WEEN [A], [B], AND [C]
, DB 6064/86
1, DB 2064/86
, DB 2064/82
ACCESS
T FOR SHENANDOAH VALLEY ELECTRIC, VERIZON SOUTH,
PHONE, AND NTELOS. DB 3548/320
T FOR SHENANDOAH VALLEY ELECTRIC
H. DB 3548/320
RY SEWER EASEMENT
EASEMENT
AND DETENSION POND EASEMENT
AL UTILITY EASEMENT, UNLESS OTHERWISE NOTED.



- NOTES:
- 35' SETBACK FROM ALL VDOT ROAD RIGHT-OF-WAYS.
 - 0' SETBACK FROM ALL PRIVATE ROADS, EXCEPT WHERE EASEMENTS ARE.
 - 15' REAR SETBACK FROM RESIDENTIAL PROPERTY.
1. PUBLIC ROAD THROUGH PROPERTY IS CONSIDERED A VDOT ROAD.
2. ALL OTHER ROADS THROUGH PROPERTY ARE PRIVATE ROADS.
3. SOME OF THE EASEMENTS FALL OUTSIDE THE PRIVATE ROAD AND IT REPRESENT A BUILDING LIMIT.

For More Information:

Keith May
540.820.7008
keith.may@cottonwood.com

COTTONWOOD
COMMERCIAL
A COMMERCIAL REAL ESTATE BROKERAGE

We obtained the information above from sources we believe to be reliable. However, we have not verified its accuracy and make no guarantee, warranty or representation about it. It is submitted subject to the possibility of errors, omissions, change of price, rental or other conditions, prior sale, lease or financing, or withdrawal without notice. We include projections, opinions, assumptions or estimates for example only, and they may not represent current or future performance of the property. You and your tax and legal advisors should conduct your own investigation of the property and transaction.